

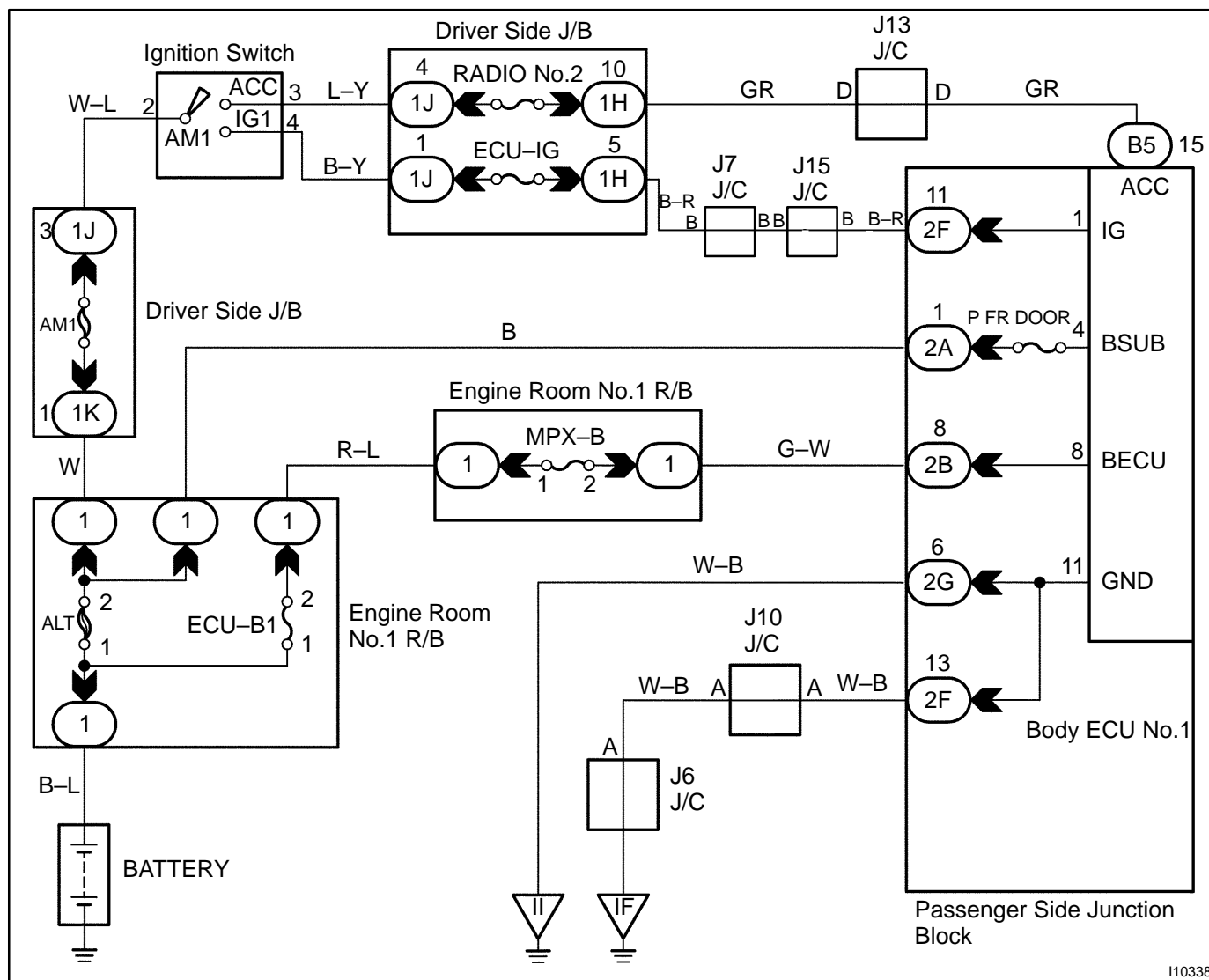
CIRCUIT INSPECTION

Power source circuit

CIRCUIT DESCRIPTION

This circuit provides power to operate the Body ECU No. 1.

WIRING DIAGRAM



INSPECTION PROCEDURE

1	Check MPX-B, RADIO No.2, P FR DOOR and ECU-IG fuse.
---	--

CHECK:

Check continuity of MPX-B, RADIO No. 2, P FR DOOR, and ECU-IG fuse.

OK:

Continuity

NG

Replace the failure fuse.

OK

2	Check voltage between terminals BECU, BSUB, IG, and ACC and GND of Body ECU No. 1 connector.
---	---

PREPARATION:

- (a) Turn ignition switch OFF.
- (b) Disconnect the Body ECU No. 1 connector.

CHECK:

Measure voltage between terminals IG, ACC, and GND.

OK:

Voltage: 10 – 14V

OK

Proceed to next circuit inspection shown on matrix chart. (See page [DI-931](#))

NG

3	Check wireharness and connector between Body ECU No. 1 and body ground.
---	--

NG

Repair or replace wireharness or connector.

OK

Check and repair wireharness and connector between Body ECU No. 1 and battery.